

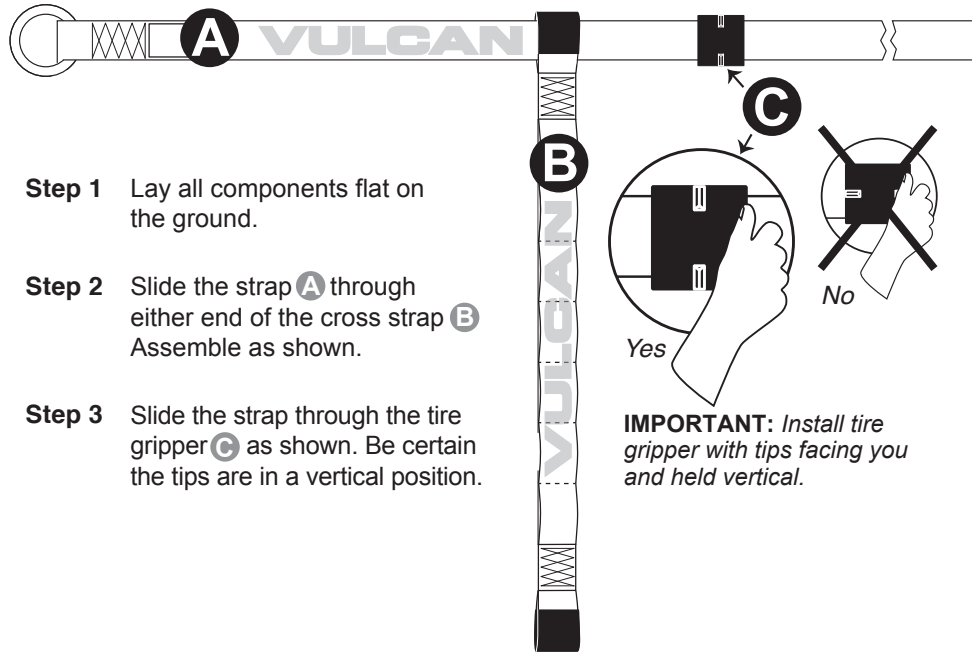
# ASSEMBLY INSTRUCTIONS

Read the Following Information Carefully Before Use

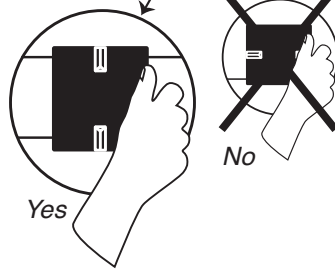
Retain this document for future reference.



## Tire Tie Down Assembly Instructions

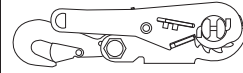


- Step 1** Lay all components flat on the ground.
- Step 2** Slide the strap **A** through either end of the cross strap **B**. Assemble as shown.
- Step 3** Slide the strap through the tire gripper **C** as shown. Be certain the tips are in a vertical position.



**IMPORTANT:** Install tire gripper with tips facing you and held vertical.

### Kit Contents



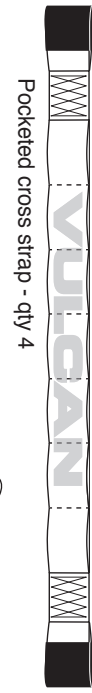
Snap hook ratchet - qty 4



Sliding tire gripper - qty 4 (pat pend)



Storage bag

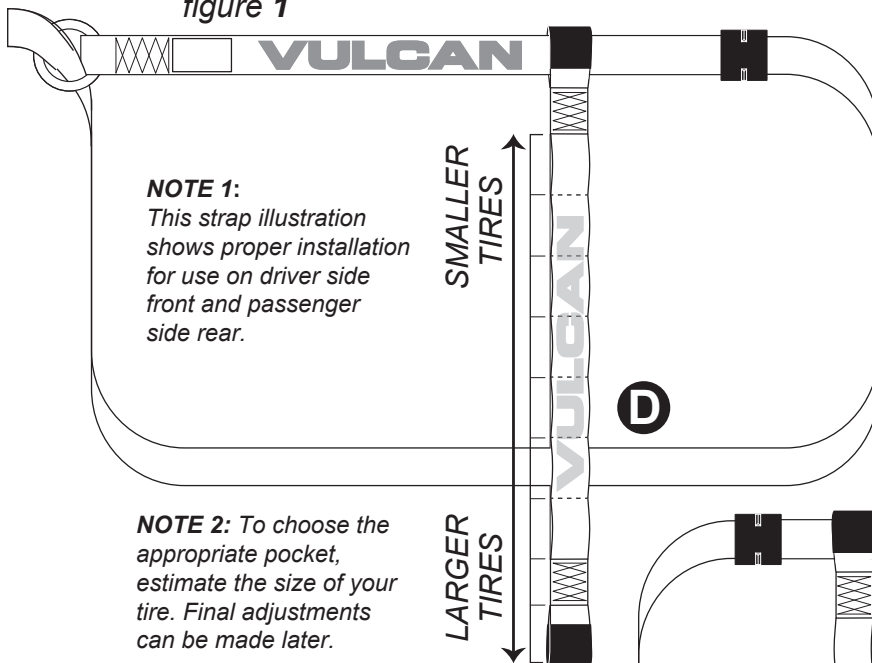


Pocketed cross strap - qty 4



Strap with sewn ring - qty 4

figure 1



**NOTE 1:** This strap illustration shows proper installation for use on driver side front and passenger side rear.

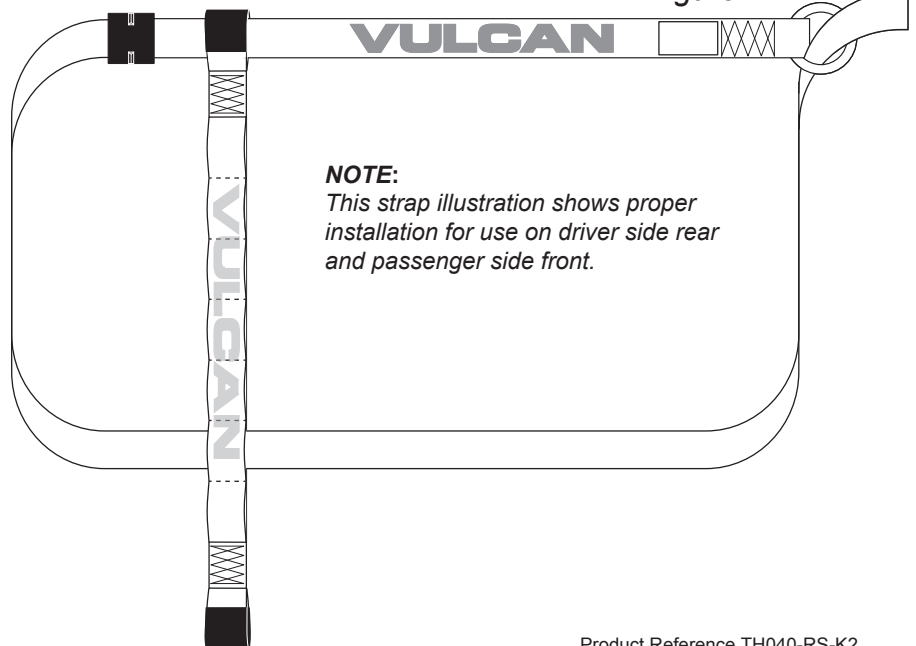
**NOTE 2:** To choose the appropriate pocket, estimate the size of your tire. Final adjustments can be made later.

SMALLER TIRES

LARGER TIRES

- Step 4** Slide the strap through the appropriate pocket **D** at the opposite end of the cross strap, see note 2.
- Step 5** Slide the strap through the metal ring to form a loop. Assembly should appear as shown.
- Step 6** Follow steps 1-5 to assemble two straps as shown in *figure 1*, and two straps as shown in *figure 2*.

figure 2



**NOTE:** This strap illustration shows proper installation for use on driver side rear and passenger side front.

# INSTALLATION INSTRUCTIONS

Read the Following Information Carefully Before Use

Retain this document for future reference.

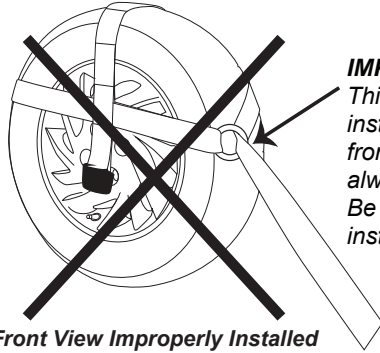
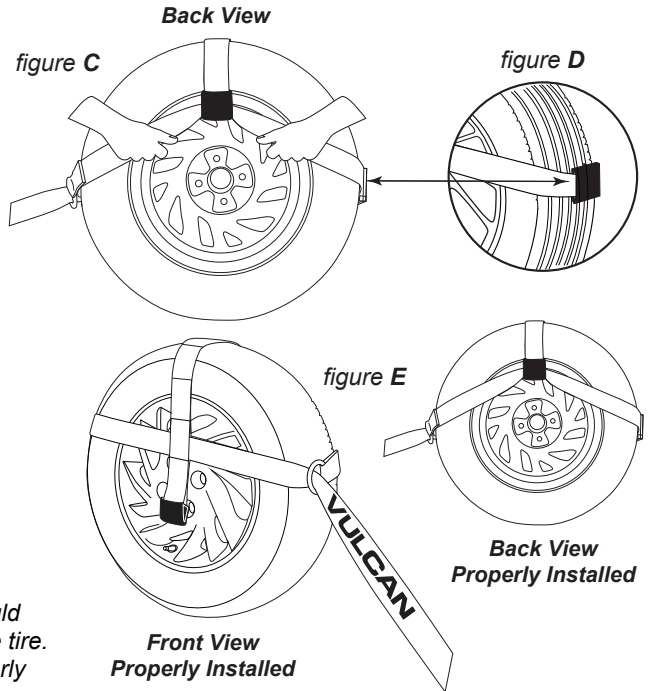


**Step 1** Install harness over the back of the tire with the cross strap positioned just above the rim as shown in *figure C*.

**NOTE:** The harness will remain in this position during transport to avoid contact with obstacles near the axle.

**Step 2** Temporarily place the rubber tire gripper near the center of the tire to keep the side strap in place, (see *figure D*) while positioning and hand cinching the harness into place.

**Step 3** Pull the strap tight around the tire, positioning the rubber tire gripper as shown in *figure D* and positioning the center strap as shown in *figure E*. **NOTE:** If the harness is positioned too high or too low on the tire, adjust the strap through an alternate pocket until it resembles *figure E* as shown.



**IMPORTANT:**  
This illustration depicts an improper installation with the metal ring coming from the front of the tire. The ring should always be coming from the back of the tire. Be certain that your assembly is properly installed, see *figure E*.

Front View Improperly Installed

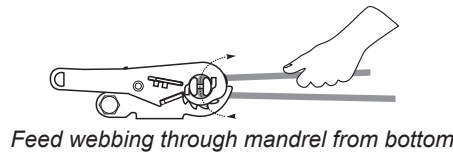
**NOTE:** Pull by hand until all slack has been removed, then tension with your ratchet. See additional instructions for proper ratchet buckle operation.

## WARNING



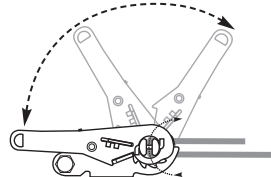
- !** This system is designed to allow your vehicle to ride freely on its own suspension. To avoid vehicle damage, allow a minimum of 10" clearance in-front, behind, and from the sides vehicle.
- !** Transported vehicles should be in park or in gear with the parking brake set.
- !** Vehicles and straps may shift during transport. Check and adjust your tension and vehicle position every 50 miles.
- !** Always secure any vehicle for transport by all four tires.
- !** Always use a backup tie down system.
- !** Vehicles should be properly chocked during transport.
- !** Never transport any automobile on trailers not designed for that specific purpose.

## Ratchet Buckle Operating Instructions



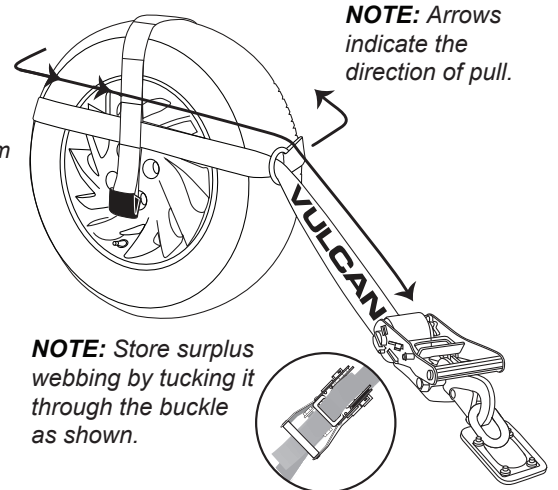
Feed webbing through mandrel from bottom

- 1** To install the strap, feed the plain end of the webbing through the slot in the mandrel of the ratchet buckle, and remove all slack by hand. Do not proceed to step 2 until all slack is removed.



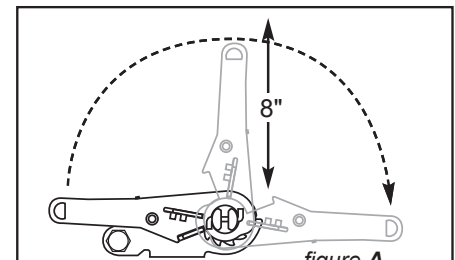
- 2** To tension the strap operate the ratchet buckle as shown above. A minimum of 1 full wrap and no more than 2 full wraps are required. Hand tension only. Do not over-tension.

- 3** To remove tension from the strap, the ratchet buckle must be opened completely. Squeeze and hold the release handle while fully opening the buckle. See *figure A*



**NOTE:** Arrows indicate the direction of pull.

**NOTE:** Store surplus webbing by tucking it through the buckle as shown.



*figure A*  
Fully released position

**IMPORTANT** Before tensioning the strap, make sure there is at least 8" of clearance above the buckle, allowing it to open completely for tension removal.